

## Package Contents

The Live GPS LIVE vehicle tracking package consists of four key items. Please take a moment to check the contents of your package to ensure the following are included.



Figure 2.0 - The Transceiver

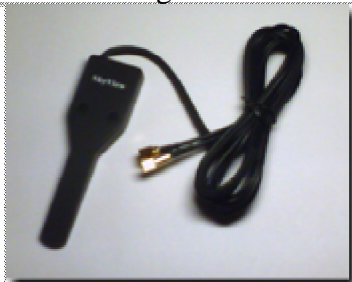


Figure 2.1 - The Antenna

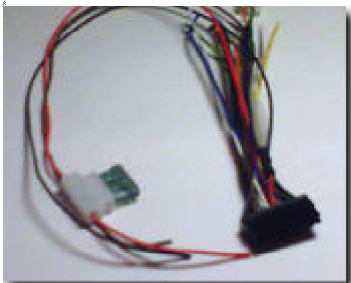


Figure 2.2 - The Wiring Harness



Figure 2.3 - The Manual

## Installation

We wrote the book on simplicity! Installation of your Live GPS Tracker LIVE vehicle tracking device is as easy as it gets - just follow these three easy steps :

1

Plug the two antenna cables and wiring harness into the transceiver unit, then place the antenna (with the white text facing UP) on your dash at the base of the windshield. Run the cables along the side of the dash at the door hinge, and place the transceiver box under your dash. For best results, consider using a zip-tie to secure the transceiver to ensure it doesn't fall from beneath the dash.

2

On the wiring harness, connect the :  
**RED wire to a constant 12-volt power line.**  
**BLACK wire to the frame ground.**  
**BROWN wire to a 12-volt accessory power source.**  
 (one which only has power when the ignition is on)

It's that simple!

3

That's it! The device is installed. For a more covert installation, you may place the antenna *under* the dash, all the way up near the base of the windshield, secretly out of sight. Our antennae can see through foam, glass, and fiberglass and plastic, but it cannot see through metal. For this reason, it is important that it be placed with no metal or wiring between it and the sky.

Now all that's left is to activate your unit. After you place your order you will get a phone number to call . You will need to provide the serial number printed on the side of your device (above the bar code). The operator will take your billing information, and will assign you an account number and password for access to our web site, enabling you to see the precise location of your vehicle at all times.

**Software Guide: Logging In**

With the Account number assigned you at registration You will go to the url given you at that time as well. A screen similar to the one shown in Figure 4.0 (below) should appear on your screen.

In the Authorization window on the left side of the screen, (see larger view in figure 4.1) , enter your account number and below it the password you selected, then click the LOGIN button.

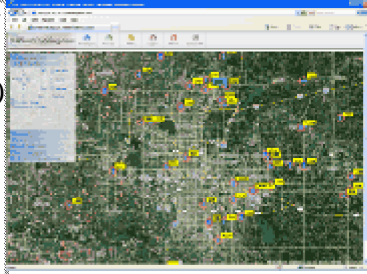


Figure 4.0 - The

Once login is complete, the map will immediately jump to your area and the location of your vehicle's).

You may move your mouse over the vehicle to show specific information about the vehicle such as latitude, longitude, and the speed at which the vehicle is traveling. The location's) of your vehicle(s) on the map are updated from the server every five seconds. The rate at which your vehicle updates the server (be it every five seconds or every 10 seconds) depends on your wireless data plan.

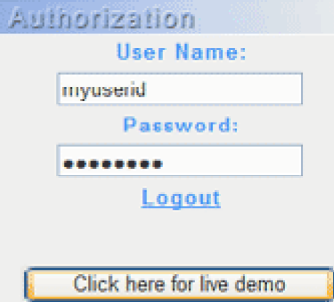


Figure 4.1 - User Login on the Authorization window

The tracking device itself gathers its location based on transmissions from a constellation of satellites; when the sky is partially obscured by a tunnel or tall buildings, you should expect a reduction in accuracy. On the left side of the map screen you will find a semi-transparent Control Panel, providing tabs for Authorization, Map Control, Tracking, Reports, Alert System, Live Support, and Historical Playback. Clicking on any of these tabs will providing access to each group of functions.

**Software Guide: Map Control**

You may select the “Map Control” tab from the control panel to the left, and the map control panel will open (see figure 5.1), providing controls to zoom, pan, and set map rendering options.

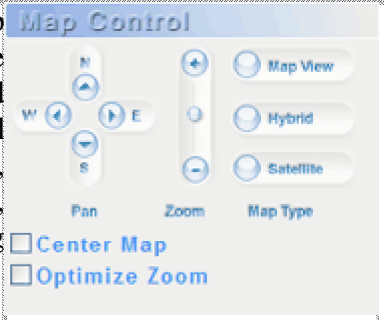


Figure 5.0 - The Map Control Panel

The system relies on Google Maps to provide maps of the coverage area. In larger metro areas, high-resolution aerial images are available; in more rural areas, aerial imagery may not provide the same level of detail as

larger metro areas. If you live in a rural area, you may find it more useful to select “Map View” instead of Hybrid view. When fully zoomed, the maps provide detailed street-level information, enabling you to see the precise location from which the car is reporting. When zoomed out completely, you have a complete view of the world.

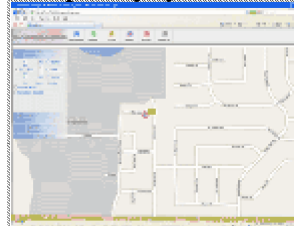


Figure 5.1 - Map View

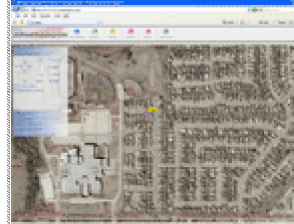


Figure 5.2 - Hybrid View

The "Center Map" checkbox, when enabled, will automatically center the map on a single vehicle (selected under the *tracking* tab), or on the center of a group of vehicles. "Optimize Zoom" will zoom as closely as possible while still keeping the group of vehicles on the viewable map at once. By default, your login will show ALL the vehicles associated with your account - up to a maximum of 512 vehicles onscreen at once. In viewing all vehicles, you manually control the area of the map you wish to view by using the zoom and pan features to move the map within the viewport. In order to select an individual vehicle, you may select the ‘Tracking’ tab from the control panel, and select a specific vehicle from the dropdown list.